

# Element Bracket Replacement Kit

New-style tilt brackets (p/n 1060572, left and 1060573, right) are essential to achieve proper three-phase wire routing. The **blue** high-temperature wire ties included with the kit are used to secure the element wiring to the bracket. The standard wire ties can be used lower in the cabinet for routing and securing the element wires. Follow the illustrations below for assessing the tilt brackets and routing the element wiring.

**NOTE:** If broken or badly frayed three-phase wire is encountered, some can be repaired. Call Frymaster's Hotline 1-800-551-8633 for instructions.

| In This Kit |  |     |
|-------------|--|-----|
| Part No.    | Description                                    | Qty |
| 1060573     | Bracket, right                                 | 1   |
| 1060572     | Bracket, left                                  | 1   |
| 8262142     | Wire tie kit (8 ties)<br><b>BLUE high-temp</b> | 1   |
| 8160579     | Sleeve,  | 2   |
| 8261385     | Wire ties, 25 standard                         | 1   |
| 8196155     | Instructions                                   | 1   |

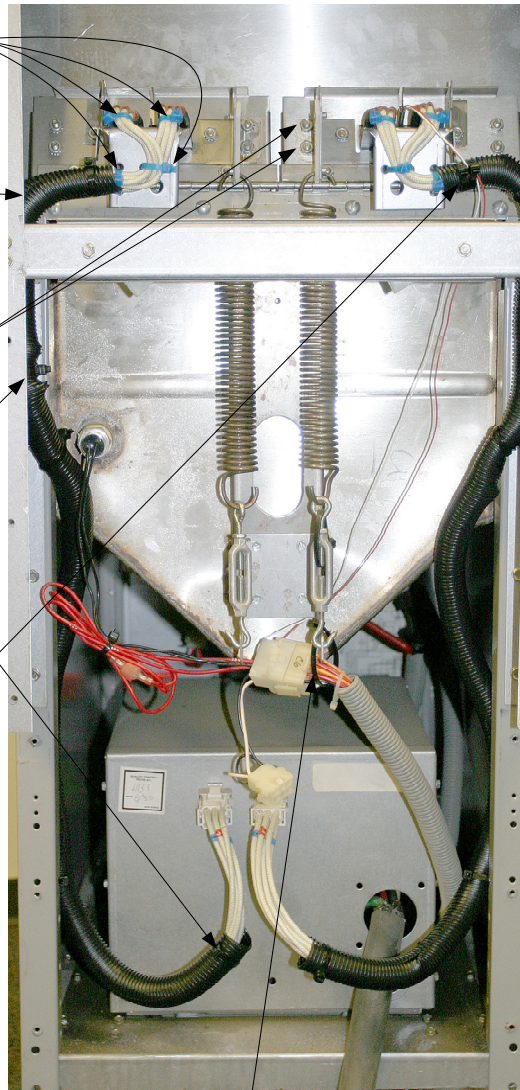
Use the provided **BLUE** high-temperature wire ties (8074158) to secure the element wires to the tilt bracket.

**NOTE:** This section of element wires must be horizontal.

Re-insert bolts into holes to seal from oil leakage.

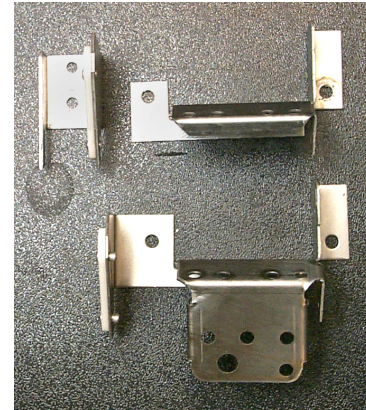
Support wire protective cover with a conventional wire tie attached to eyelet.

Attach wire ties to both ends of wire loom to prevent wire loom from separating.

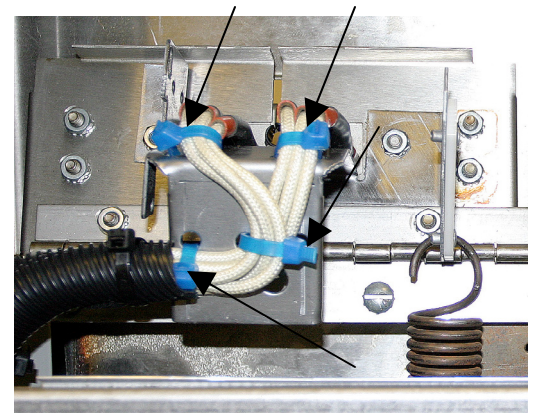


**Figure 3:**  
Rear view of Electric fryer

Suspend C6 connector from spring hanger loosely with wire tie to support probe wires.



**Figure 1:** If present, the two-piece bracket at top should be replaced by the one piece bracket (below). An additional flange on the new bracket provides an additional surface to secure the elements wiring.



**Figure 2:** The **blue** high-temp wire ties are shown securing the element wires to the one-piece tilt bracket in four places as indicated by the arrows.

## **Instructions for replacing the new-style tilt brackets.**

1. Remove the back panels to gain access to the brackets and wires.
2. Release and remove the element springs.
3. Release all wire ties and wire clamps.
4. Remove all fiberglass wire sheathing.
5. With the elements down, remove the nuts and remove the old-style element bracket.
6. Attach the new-style bracket and be sure that you replace all bolts and nuts removed to prevent oil leaks.
7. Using the provided **BLUE** high-temperature tie wraps, secure the element wires to the new tilt bracket as shown in the upper left corner of Figure 3.
8. Replace the old fiberglass sheathing with the new black corrugated wire loom. **Make sure that the beginning of the wire looms, directly behind the elements, are horizontal until they contact the cabinet side. See Figure 3.** Secure the wire loom at both ends as well as every 6-10 inches with tie wraps. Secure the wire loom to the frame using the existing eyelet and any other place necessary to keep it secure and out of the springs.
9. Make sure that probe and high-limit wires are secured clear of the springs and tie wrapped loosely from the spring hanger. See Figure 3.
10. Reattach the element springs.
11. Move elements up and down to make sure that nothing is binding or pinched.
12. Replace the back panels and the installation is complete.

**If you have any questions please contact Frymaster's Technical Support at 1-800-551-8633.**